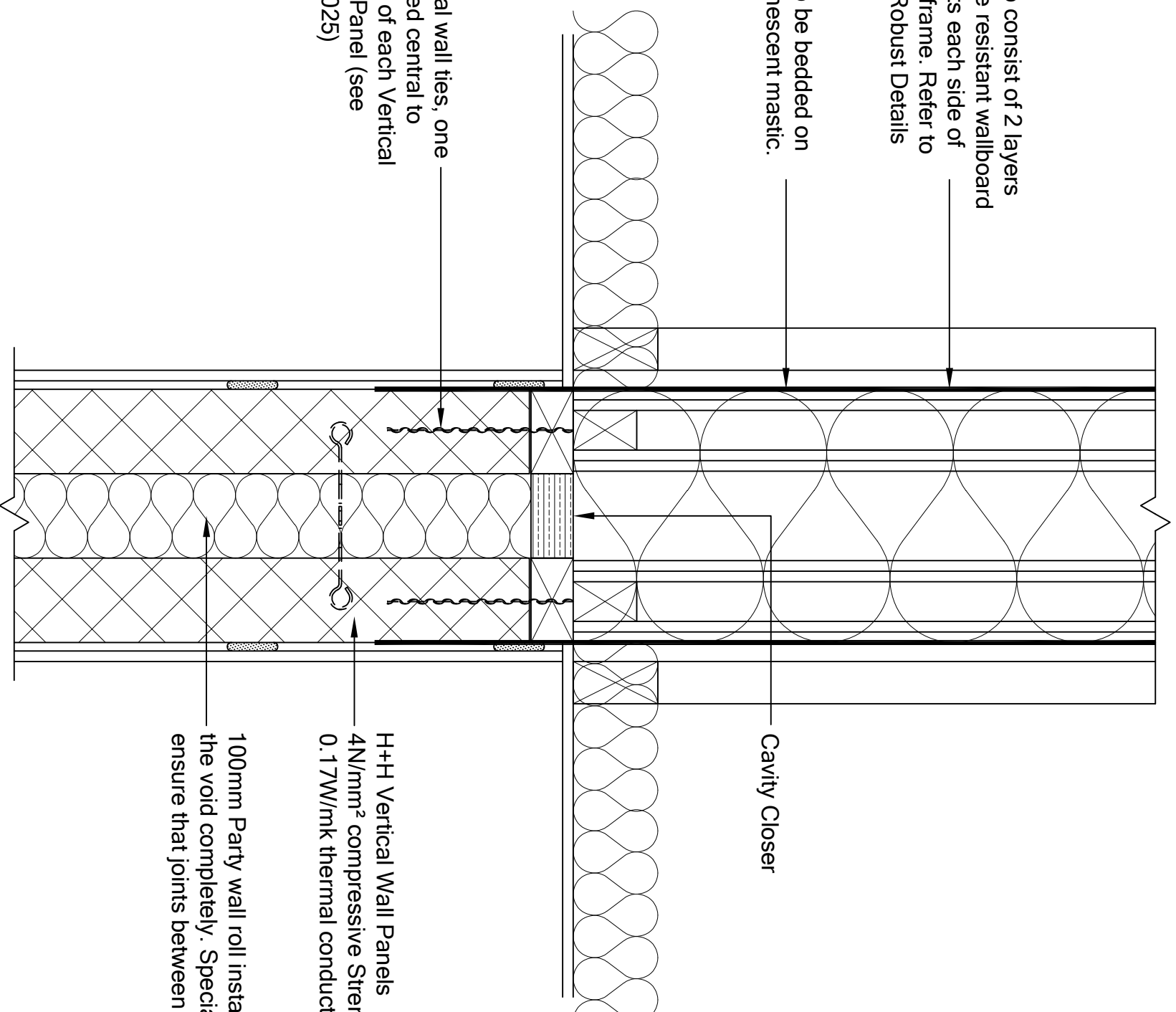


Party wall panels to consist of 2 layers of 12.5mm moisture resistant wallboard with staggered joints each side of 47mm thick timber frame. Refer to Appendix A of the Robust Details handbook.

Party wall panels to be bedded on three strips of intumescent mastic.



Helical wall ties, one located central to head of each Vertical Wall Panel (see VED025)

Cavity Closer

H+H Vertical Wall Panels  
4N/mm<sup>2</sup> compressive Strength  
0.17W/mk thermal conductivity

100mm Party wall roll installed in the cavity filling the void completely. Special care must be taken to ensure that joints between elements are fully filled.

REV.	DATE	DESCRIPTION	BY
01.	7/3/17.	General mods.	MAB.

These details have been produced for guidance only. It is the responsibility of the building designer to ensure that the details shown are compatible with the overall building design and will satisfy the relevant parts of the Building Regulations applicable before they are adopted into the project design.



H+H UK Limited  
Technical Services Dept.  
Celicon House  
Igham, Sevenoaks  
Kent, TN15 9HZ  
Tel +44 (0)1732 880580  
E-mail tsd@hiceicon.co.uk

TITLE  
Spandrel Panel connection at  
Vertical Wall Panel separating wall

DWG No. VED024

DRAWN BY MAB CHECKED BY ---

DATE 02/11/16 SCALE NTS REV.NO. 01